

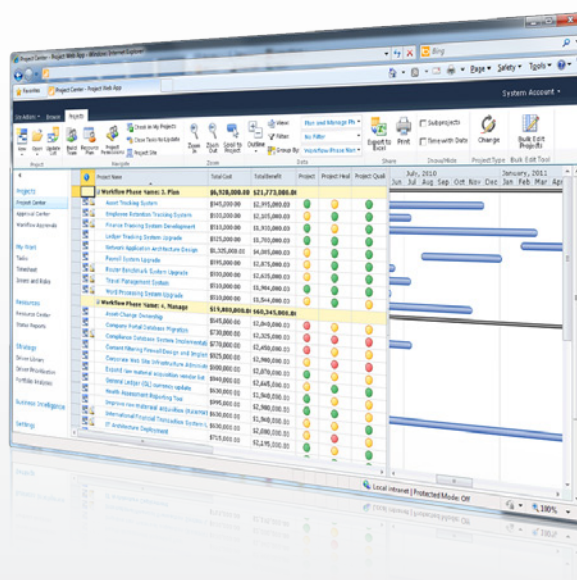


Create Project Workflows Quickly & Easily

Nintex Workflow for Project Server 2010 empowers project and portfolio managers to design and implement the processes they want without the need for complex and costly development cycles.

Nintex Workflow for Project Server 2010 brings the class leading workflow design experience of Nintex Workflow to the Microsoft Project Server 2010 platform, with an easy to use web based drag-and-drop designer, enhanced workflow capabilities, and deep integration across SharePoint, Project Server, and external systems.

For further information on Nintex Workflow 2010*, go to www.nintex.com/workflow



✓ GRAPHICAL WEB INTERFACE

✓ IMPROVE PROJECT MANAGEMENT AND GOVERNANCE

✓ BUILT ON SHAREPOINT, JUST LIKE PROJECT SERVER

- Browser based client (no desktop software required)
- Easy to use drag and drop workflow designer
- Visual workflow progress
- Associate workflows with Enterprise Project Types (EPT's)
- Automate Status Reports, Risk Register reviews, peer reviews
- Automate the creation / approval of project artefacts
- Simple deployment and management
- Deep integration with Project Server and SharePoint
- Create native Project Server workflows

HOW IT WORKS

Workflows created with Nintex Workflow for Project Server 2010 are assigned to EPT's and can be configured to present Project Detail pages (PDP's) and set stage status through the lifecycle phases.

Use Nintex Workflow for Project Server 2010 to enforce and manage the creation / approval of project artifacts, automated reminders, and follow-ups on recurring Project Management Office requirements, such as Weekly Status Reports, Risk Register reviews, and peer reviews.

EASE OF USE

Nintex Workflow for Project Server 2010 is quick to install, easy to manage, and runs within SharePoint and Project Server with minimal footprint.

Create governance and collaboration workflows, with no code / no custom development – use only a browser, and stay within Project Server while you do it.

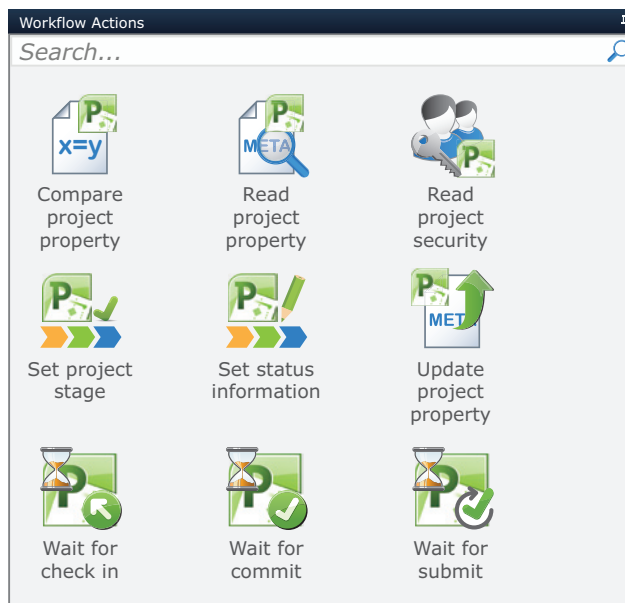
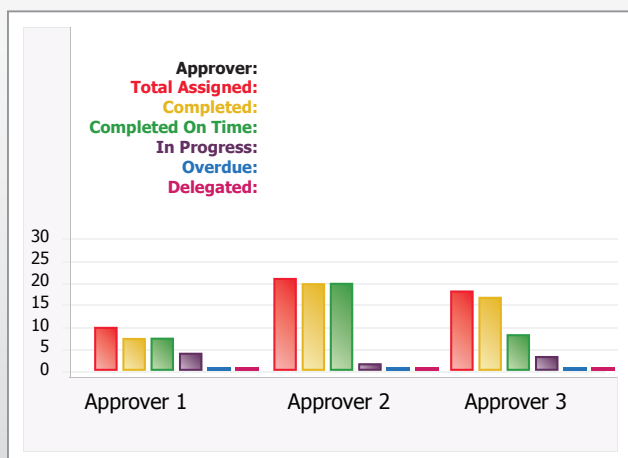
LEVERAGE THE SHAREPOINT PLATFORM

Improve collaboration and communications across the project team, during the execution and management of given projects.

In addition to the Project Server specific activities, the full range of Nintex Workflow 2010 actions (80+) can be used to gather data from disparate systems, and automate SharePoint activities, manage project team sites and processes, assign tasks, and approve documents.

MEASURE AND MANAGE

Workflows created with Nintex Workflow for Project Server 2010 provide greater visibility into process status, compliance, bottlenecks, and participation. For example, you can analyze how long project approval requests take to be approved, how often requests are escalated, the time taken by each approver, etc.



ANYWHERE ACCESS

Design, deploy, manage, and monitor workflows from the Project Web App browser interface.

Use the Nintex LazyApproval feature to complete project stage and task approvals from any email capable device.

INTEGRATION

Utilize the built in integration capabilities of Nintex Workflow to create Active Directory accounts, set Exchange calendar appointments, read and write data from Microsoft CRM, and integrate project processes with other external systems using web services, SQL, LDAP, XML, BizTalk and other common middleware and open standards interfaces.

CUSTOMIZATION AND EXTENSIBILITY

Create custom workflow activities with Visual Studio, or use the drag and drop designer to create no-code User Defined Actions.

SHARING AND REUSE

Save and reuse workflow logic across projects, departments and teams, or use templates to enforce standard processes and methodology.

Encapsulate standard processes into User Defined Actions that can then be used as standard actions in other workflows.